

SCRIBE Scholarships

January 26, 2021

SCRIBE ™
For GEAR UP



Nuts and Bolts

- This call is being recorded.
- Please remain on mute until you have a question or comment.
- Feel free to use chat to ask questions or say hello.
- Slides are available at <https://tinyurl.com/SCRIBEScholarships>.
- We would love to see your smiling face. So please use your camera if you are comfortable.



Objectives

1. Discuss tracking scholarship applications and awards.
2. Introduce the SCRIBE Scholarship Module.
3. Demonstrate the features of SCRIBE Scholarship.
4. Provide the pricing structure for SCRIBE Scholarship.
5. Ask questions about SCRIBE Scholarship.



Scholarship Data



In the chat box, please answer the questions below.

- How do you currently track scholarship applications and awards?
- How do you use scholarship application and award data?

Look Familiar?

| | A | B | C | D | E | F | G | H | I | K |
|----|-------------|-------------|------------|------------|-----------|-----------------------|--|--|---|-----------|
| | School Name | Grade Level | Student ID | First Name | Last Name | Student Email Address | How many scholarships did you apply for? | How many scholarships have you been awarded? | How much in scholarships funds have you been awarded? | College 1 |
| 1 | | | | | | | | | \$ - | |
| 2 | | | | | | | | | \$ - | |
| 3 | | | | | | | | | \$ - | |
| 4 | | | | | | | | | \$ - | |
| 5 | | | | | | | | | \$ - | |
| 6 | | | | | | | | | \$ - | |
| 7 | | | | | | | | | \$ - | |
| 8 | | | | | | | | | \$ - | |
| 9 | | | | | | | | | \$ - | |
| 10 | | | | | | | | | \$ - | |
| 11 | | | | | | | | | \$ - | |



Look Familiar?

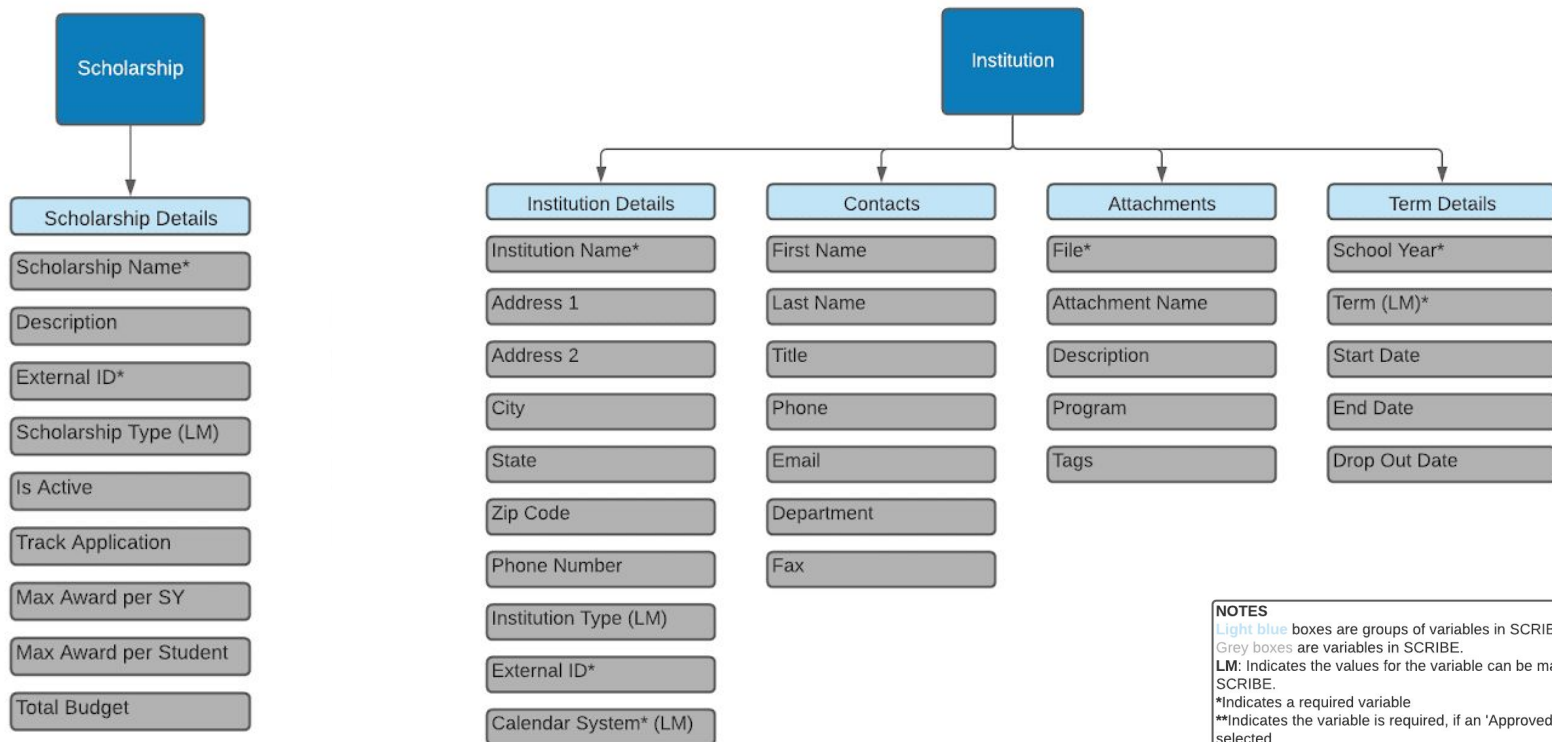
| | A | B | C | D | E |
|----|--------|--|-------------------|----------|--|
| 1 | Column | Field Name | Required | Type | Notes |
| 2 | A | School Name | Y | Alpha | These fields have been pre-populated based on SCRIBE. If a student is not listed, please add him/her to the bottom of the list. |
| 3 | B | Grade Level | Y | Number | |
| 4 | C | STARS ID | Y | Number | |
| 5 | D | First Name | Y | Alpha | |
| 6 | E | Last Name | Y | Alpha | |
| 7 | F | Student Email Address | Y when applicable | Email | This field has been pre-populated based on data from the College Application spreadsheet. If this column is blank or incorrect, please complete. |
| 8 | G | How many scholarships did you apply for? | Y when applicable | Number | Please complete this column with a whole number, representing the number of scholarships each student applied for. |
| 9 | H | How many scholarships have you been awarded? | Y when applicable | Number | Please complete this column with a whole number, representing the number of scholarships each student has been awarded. Note: the number of scholarships awarded cannot be larger than the number applied for. |
| 10 | I | How much in scholarship funds have you been awarded? | Y when applicable | Currency | Complete this column to reflect the total amount of scholarship funds awarded to each student. |
| 11 | J | To how many colleges have you been accepted? | Y when applicable | Number | Complete this column to reflect the number of post-secondary institutions each student has been accepted to. |
| 12 | K | College 1 | Y when applicable | Alpha | This field is a dropdown box. Post-secondary institutions in New Mexico are |

Why Track Scholarship?

- Tracking students' scholarship applications and awards can inform programming.
- Reporting on applications and awards can serve as an program outcome used to communicate the impact of GEAR UP.
- Support students' understanding regarding affording college.
- For grants with a scholarship component, data has to be reported in the APR and FPR.
- Create some healthy competition between sites.
- Tracking scholarship data alongside participation, standardized tests, and course completion paints a longitudinal picture of college readiness.
- US DoE Scholarship study...



All Scholarships



NOTES

Light blue boxes are groups of variables in SCRIBE.

Grey boxes are variables in SCRIBE.

LM: Indicates the values for the variable can be managed through List Management in SCRIBE.


*Indicates a required variable


**Indicates the variable is required, if an 'Approved' or 'Verified' Award Status is selected.

SCRIBE Scholarship Module

The SCRIBE Scholarship Module provides users the opportunity to collect data on scholarship applications and awards.

SCRIBE Scholarship module has two categories of scholarships: Application Tracked and Application Not tracked.

 **Application Not Tracked Scholarships** are used to collect information about the scholarship students apply for and when applicable, the award amount.

 **Application Tracked Scholarships** are appropriate for grantees administering a GEAR UP scholarship. It allows users to track each student's application, eligibility verification, award, and payment for GEAR UP scholarships.



Application Not Tracked



NOTES

Light blue boxes are groups of variables in SCRIBE.

Grey boxes are variables in SCRIBE.

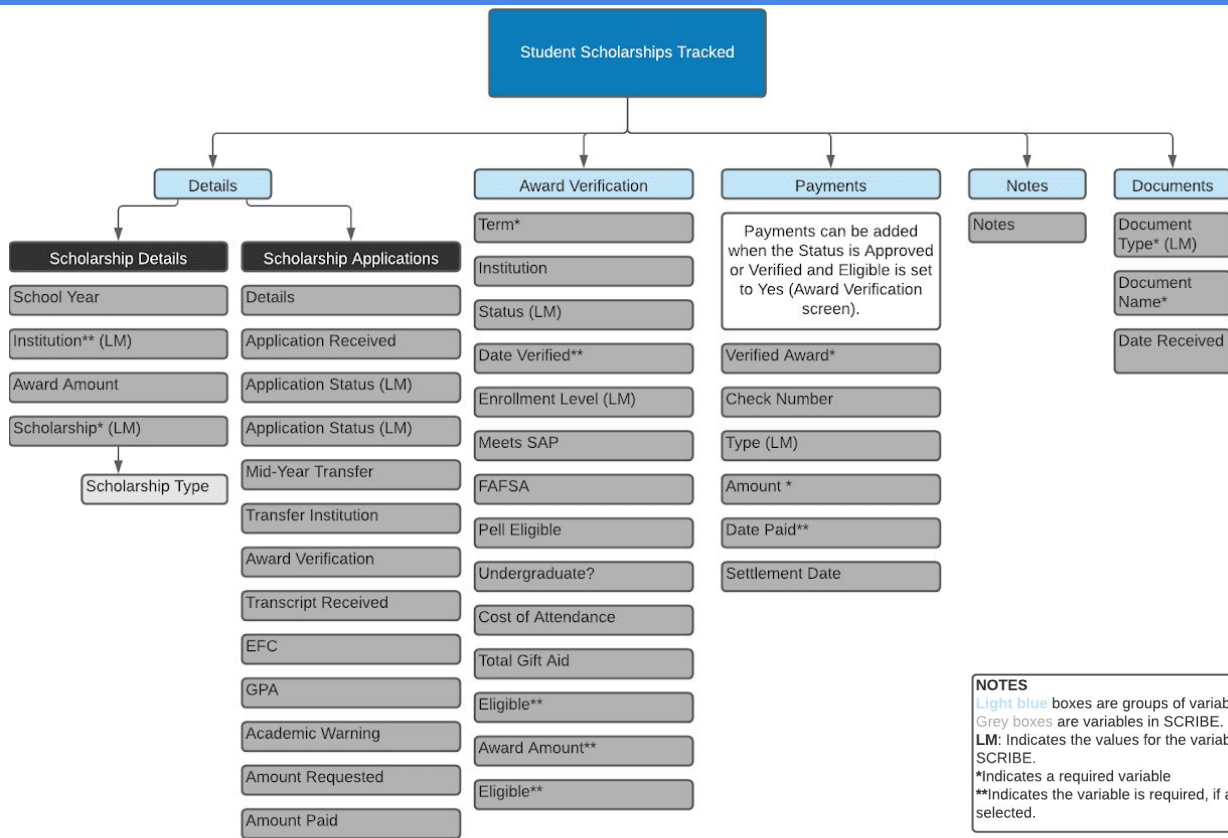
LM: Indicates the values for the variable can be managed through List Management in SCRIBE.

*Indicates a required variable

**Indicates the variable is required, if an 'Approved' or 'Verified' Award Status is selected.



Application Tracked



NOTES

Light blue boxes are groups of variables in SCRIBE.

Grey boxes are variables in SCRIBE.

LM: Indicates the values for the variable can be managed through List Management in SCRIBE.

*Indicates a required variable

**Indicates the variable is required, if an 'Approved' or 'Verified' Award Status is selected.

SCRIBE Scholarship Features

- High level of grantee control over the data.
- Ability to customize different aspects of the data.
- Import data into SCRIBE Scholarships module.
- Generate reports on scholarship applications, eligibility, awards, and disbursement.
- Two categories of scholarships are supported in SCRIBE to provide grants with the flexibility to collect data at different levels.



Pricing

- Introductory pricing for 2021
- One time setup, configuration, and training fee of \$2,400 includes a grant-specific Scholarship user manual
- Annual subscription fee of \$7,500
- If do not renew, your information will remain in “view only” state and you will have access to historical data.
- Expectations for 2021
 - Additional Training Material
 - New Reports and Best Practice Techniques
 - Imports



Next Steps

Contact Jim Brown at jbrown@xcalibur.com or 703-629-0664 to add the SCRIBE Scholarships module to your existing contract.



Questions

Please type your questions in the chat box, or take yourself off mute to ask questions directly.

